

MOTION sit-stand desks



FEATURES

- Easy desk control
- Individually adjustable height
- Height adjustment via Bluetooth remote control application
- Smart cable management solutions

QUALITY STANDARD

- LST EN 527-1:2011
- LST EN 527-2:2017
- LST EN 1730:2013

TECHNICAL INFORMATION

Desktop

- 25 mm MFC (melamine) with 2 mm ABS edging;
- 80 mm gap between bench desktops.

Desktop types

- Plain desktop;
- Desktop with a cut-out for grommet and wire management;
- Desktop with a scallop for wire management;
- Sliding desktop for wire management.

Desk control button types

- BA, TE, TA – up and down drive;
- MA – up and down drive and 3 memory position;
- LA – up and down drive, 2 memory positions, automatic drive on memory positions, LED reminder, integrated Bluetooth.



BA



TE



TA



MA



LA

Frame

- L-shaped angle – 60x45x460mm;
- Metal tube – 40x20 mm;
- Powder coated metal, matches the colour of columns.

Lifting columns

- Types: two (2) or three (3) level columns;
- Integrated anti-collision sensor PIEZO for three (3) level columns, optional anti-collision sensor for two (2) level columns;
- Two motors;
- Soft start and soft stop;
- Lifting speed: up to 38 mm / sec;
- Stroke length: DL05 (2) – 500 mm, DL06(3) – 650 mm;
- Rectangular tube dimensions: 50x80 mm;
- Lifting capacity: up to 120 kg;
- Powder coated metal, matches the colour of frame;
- Column levellers, up to 10 mm;
- Side column covers made of MFC. Colour combinations are possible.



DL05 (2)



DL06 (3)

Connecting component (DOZ008)

- Made of two metal components;
- Assembly without screw;
- Matches the colour of columns and frame;
- Distance between desktops 30 mm, distance between columns 85mm.

Electronic data power unit

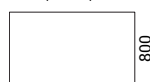
- Input: 230 V (or 120 V for US market);
- Frequency: 50 Hz (or 60 Hz for US market);
- Output: 12 - 40 V, 9A;
- Power Plug: EU, UK, CH, US;
- Energy consumption: standby 0,1 W;
- Operating Cycle: 1 minute on, 9 minutes off.

RANGE

Desk with panel legs



1400, 1600, 1800



1400, 1600, 1800



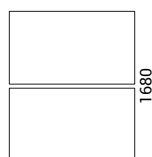
1400, 1600, 1800



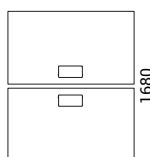
2-desk bench with metal legs



1400, 1600, 1800



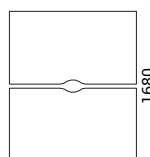
1400, 1600, 1800



2-desk bench with one open metal leg



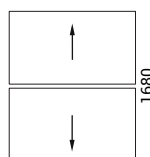
1400, 1600, 1800



2-desk bench with panel legs



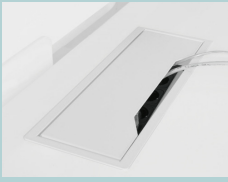
1400, 1600



Desk height: 700-1200 mm (2), 650-1300 mm (3)

Must be ordered

(for desktops with cut-out)

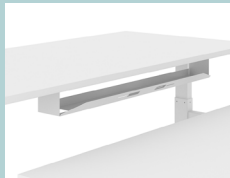


Metal grommet:
317x119 mm, H=27 mm

Optional



Acoustic screens



Cable trays



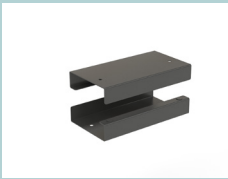
Cable ducts



Felt-lined metal
drawers with lock



Set of desks connecting
components



Cable cover (between
two benches)



App control via
Bluetooth (iOS,
Android)



Anti-collision sensor



Power socket blocks



External power socket
blocks

ADDITIONAL INFORMATION

Anti-collision technology

- Minimizes the risk for damages on a desk caused by squeezing or blocking of obstacles in up and down direction.



Things to be aware of:

- Does not work if the collision happens during the initialization phase;
- If the collision happens within the 1st sec of use or after the button on the control unit has been released, it will not work;
- If the collision happens over too long time and with the very soft object, it will not work.